



TS-1800 Versions EM1.5.3.12 & PPC 1.3.7 TS-1800 Software Release Notes

March, 2021

New Embedded Software Features

The following software features have been added in Version 1.5.3.12

1. A Waste cartridge status bar has been added during waste processing.
2. Abort is enabled for the following functions:
 - a. A *Job* can be aborted at any point.
 - b. *Init/Power down* can be aborted by restarting.
 - i. **The operator cannot stop or cancel the heating.**
 - c. *Thread loading* can be canceled by pressing the stop button.
 - d. *Idle* mode can be canceled by performing any action.
 - e. *Ink filling* can be stopped by extracting the cartridge.
 - f. *Waste emptying* can be stopped by opening the door.
3. A Job begins only when all machine parameters (temperature and air flows) are stable.
4. Ink filling progress bar has been added.
5. The air flow level can be read at the "other" WHS orifice.
6. Minimum Ink Volume Threshold at the dispenser. Values below 0.5% will be set to zero.
7. The lubricant filling process can now be done in two stages. The entire process takes 1.5 hours, but the operator can now fill 0.5 liters at the beginning of installation, and finish the process at a later time.
8. The Dispenser Valve mode is set to *Mixer* when no job is running to ensure the dispenser pressure does not increase above the operation level.
9. When the thread loading wizard is active the dying head air flow is reduced from 5 to 3.
10. Cleaner pressure discharge during Job.

New PPC Features

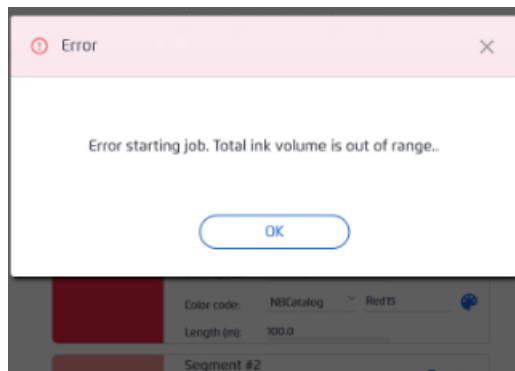
The following features have been added to the PPC in Version 1.3.7

1. Icon on the tablet that shows the LAN connection and quality.
2. *Thread Path Issue Solving Wizard* to help the operator solve thread path issues.
3. Ink filling progress bar and messages.
4. All ink filling related messages are displayed according to the ink filling sequence.
5. Option to update the time zone in the PPC without doing a factory reset.
6. Stand By button support at Main menu.
7. Color Space defined for each Segment & Volume for Standard User: Each color segment now has its own drop list with all the color spaces available (RGB, Lab, and CMYK), and the user can switch between them.
8. Import Job from Excel: the customer can create a job in Excel and import it to the PPC.
9. Standard users can now set Custom Lubrication Volume setting for each thread type.
10. Dispensing cleaner button has been added.

Bugs fixed for versions 1.4.6.46 - 1.5.3.12:

The following bugs have been fixed in Version 1.5.3.9

- Bug 4559
Issue: Machine restarts after pressing **Dye** while heating up.
- Bug 4553
Issue: Dispenser empties in middle of a job. New calculation for dispenser ink volume.
- Bug 4549
Issue: Left wheels do not rise and the error message: *Auto thread loading: Left rockers timeout* appears.
- Bug 4514
Issue: The LED on the machine continues blinking after Waste emptying stopped.
- Bug 4504
Issue: Error message when saving a job that uses catalog colors on PPC.



- Bug 4375
Issue: *Over temperature* error appears on the PPC when the machine in idle mode, hence cooling down.
- Bug 4241
Issue: The Waste level resets for no apparent reason.
- Bug 4193
Issue: Can start a job containing colors that are *Out of Gamut*.

- Bug 4199

Issue: machine doesn't change speed when transferring from one speed to another through idle mode.

- Bug:4476

Issue: Job stop middle of job due to memory discard

Known Issues

The following issues remain unresolved in Version 1.5.3.12

- Bug 3676,4512

Issue: Tablet occasionally disconnects from the machine and reconnects after a few minutes.

Action: Wait five minutes for the tablet to reconnect to the machine.

- Bug 3251

Issue: Machine is in *Ready to Dye* mode while it is still warming up. If a job is run, the job fails and the winder gets stuck.

Action: Wait until the machine finishes warming up and rerun the job.

- Bug2720

Issue: The *Power Up Bit Failure* message is displayed for unknown reasons.

Action: Restart the machine.

- Bug 3374

Issue: The dryer temperature is too high after machine reset.

Action: Restart the machine and rerun the job.

- Bug 4542

Issue: The system is taken out of idle mode before the heaters reach the idle set temperature.

Action: Restart the machine and rerun the job.

- Bug 4760

Issue: PPC and Machine disconnected & connect again after few seconds.

Action: there is nothing to do the PPC and machine are connecting automatically in few seconds